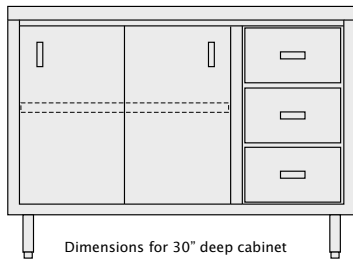


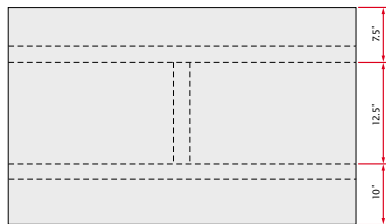
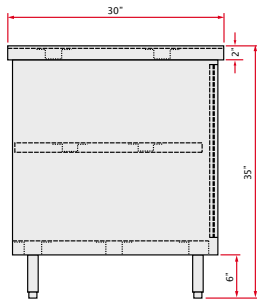
# Stainless Steel Cabinet Series



Model C3048



Dimensions for 30" deep cabinet



## Flat Top Cabinet

- All Heavy Duty Series Stainless Steel Construction
- Fully Welded and Assembled
- Reinforced Frame and H-Style Hat Channels
- Removable Sliding Stainless Steel Doors
- Adjustable Stainless Steel Intermediate Shelf
- Adjustable Stainless Steel heavy duty Leg Assembly
- Optional Drawers, (12x16.5x7") come complete with Locks
- Full extension drawer slides

Model No. with 2 sliding doors	Weight lbs.	Model No. with 2 doors & 3 drawers	Weight lbs.	Size D" x L" x H"
<b>24" DEEP FLAT TOP CABINETS</b>				
C2436	120	C2436D	130	24 x 36 x 35
C2442	130	C2442D	140	24 x 42 x 35
C2448	140	C2448D	150	24 x 48 x 35
C2460	165	C2460D	175	24 x 60 x 35
C2472	200	C2472D	210	24 x 72 x 35
C2484	230	C2484D	240	24 x 84 x 35
C2496	260	C2496D	270	24 x 96 x 35
<b>30" DEEP FLAT TOP CABINETS</b>				
C3036	130	C3036D	140	30 x 36 x 35
C3042	145	C3042D	155	30 x 42 x 35
C3048	160	C3048D	170	30 x 48 x 35
C3060	190	C3060D	200	30 x 60 x 35
C3072	220	C3072D	210	30 x 72 x 35
C3084	250	C3084D	240	30 x 84 x 35
C3096	280	C3096D	270	30 x 96 x 35

Sizes nominal, specifications subject to change without notice.

## All Drawer Cabinets

- Same features as Flat Top Cabinets above
- Three drawers as shown below
- 30"D holds 2 - 12x20 pans;
- 24"D holds 1 full & 1 half long pan



C2424D 24" x 24" x 35" 105lbs.  
C3024D 30" x 24" x 35" 115lbs.



Model C3048D